

product specifications for:
CLS Series 18 Contact

Item #: CLS182FCONT

Description

FEMALE CLS SERIES 18 INLINE CONTACT #6 - #2 AWG

Electrical Specifications

Max. Amperage: 190A with #2 AWG

Max. Voltage: 600V AC/DC

Material Specifications

Contact Material: Brass

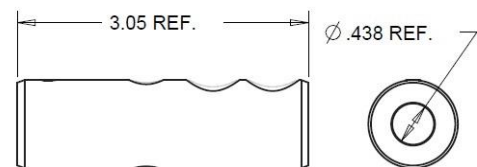
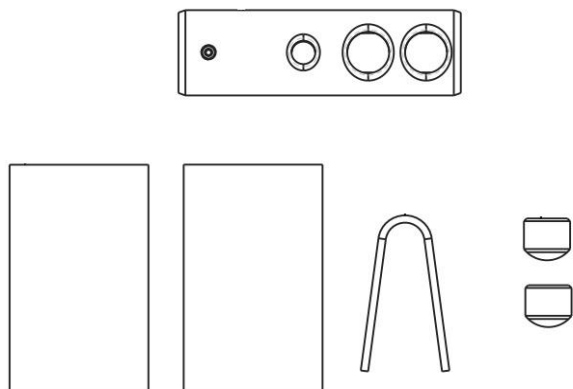
Mechanical Specification

Gender: Female

Connection Type: Double Set Screw

Application

Use with CLS18FBOOT for new assemblies. Use as replacement parts for CLS182FB (new version).



SHOWN FOR SIZING