

product specifications for:  
**CLM Series 15 Inline Cams**

**Item #: CLM2F**

**Description**

FEMALE CLM SERIES 15 INLINE #8 to #2 AWG

**Electrical Specifications**

Max. Amperage: 150A with #2 AWG

Max. Voltage: 600V AC/DC

**Material Specifications**

Housing Material: Santoprene TPV

Contact Material: Brass

Temperature Rating: -40°C to 105°C

**Mechanical Specification**

Gender: Female

Connection Type: Double Set Screw

(Torque to 85 in-lbs.)

Retaining Screw: High Strength Nylon

Example: CLM2F + **A** = CLM2F-A

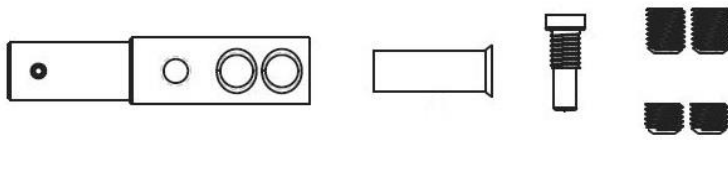
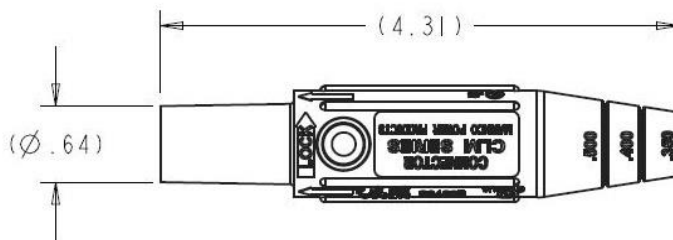


**Standards and Certifications**

UL Listed: File E471676

CSA Certified: 0812900000

Environmental Rating: Type 3R & 4



toll free 800.307.6702 | [marincopowerproducts.com](http://marincopowerproducts.com)

©2015 Marincó Power Products. All rights reserved.

**MARINCO**  
power products