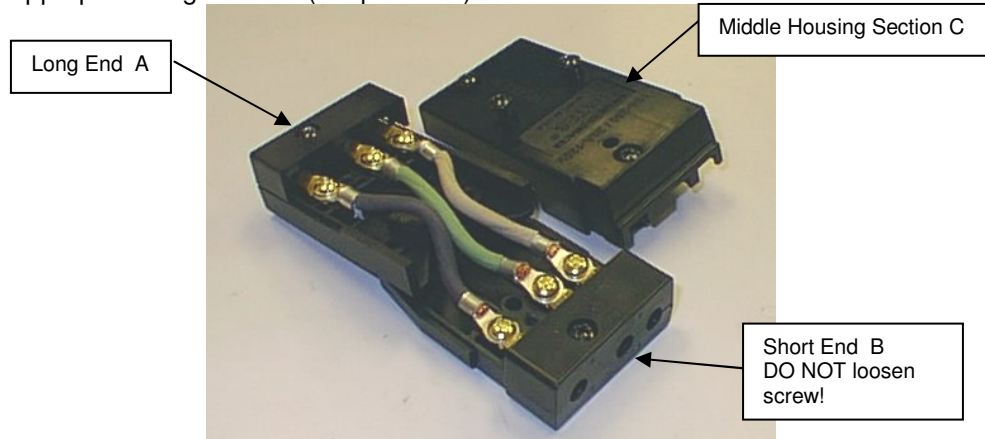


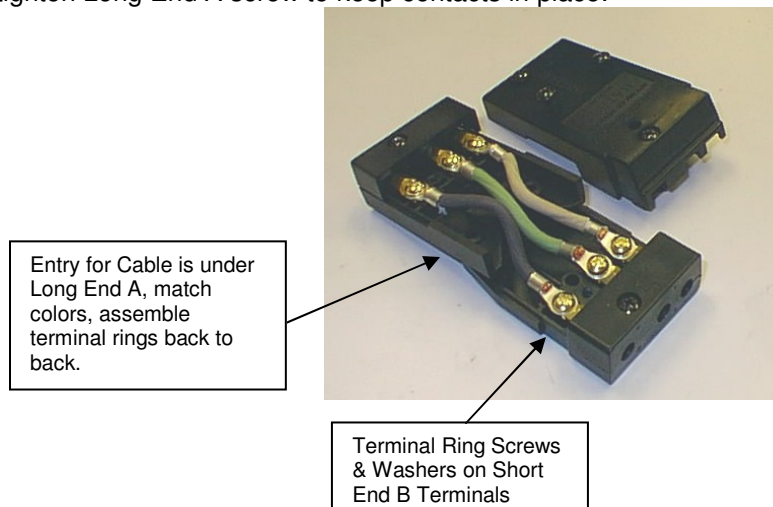
bates® TRIXFER.FF™

Stage Pin Jumper Tap, Female to Female 20A/125V Device

1. The TRIXFER.FF can be used on cables, 16/3 type SJO, 0.34" NOM, through 12/3 SO 0.62" NOM. Typical cord clamp insert use as follows: NOTE: Cord clamp has two sides, one is flatter than the other.
NO Inserts: 14/3 SO, 0.55" NOM. through 12/3 SO, 0.62" NOM.
One Insert: 16/3 SO, 0.41" NOM., 12/3 SJ, 0.45" NOM. through 14/3 SO, 0.55" NOM.
16/3 SJ, 0.34" NOM. through 14/3 SJ, 0.38" NOM (use flat side of the cord clamp).
2. Strip cable jacket 1".
3. Strip conductors 3/8".
4. Crimp the loose wires with the 12-10 #8 ring terminal provided. If wire used is smaller than the 12-gauge wire, use appropriate ring terminal (not provided) with # 8 stud size.



5. To remove the large Middle Housing Section C, remove 4 screws on Middle Housing Section C lid. Slightly loosen the Long End A screw. While holding body of TRIXFER.FF, tip the Long End A slightly to release housing from Long End A. Lift housing at Long End A to completely remove housing.
DO NOT LOOSEN Short End B screw.
6. Retighten Long End A screw to keep contacts in place.



7. Remove terminal ring screws on Short End B. Remove washers and existing inside wires from terminals.
8. Slide cable into housing (see #1 for cord clamp and cable information) and put the terminal rings from cable onto the Short End B terminals **wire side down**, so terminal rings will lay back to back when reassembled. Match wire colors to TRIXFER.FF assembly. Do not cross wires.
9. Replace TRIXFER.FF terminal rings onto cable terminal rings so they lay back to back with cable terminal rings, then put on washer and screw, tighten screw to 12 in-lbs.
10. Put housing back on and tighten screws to 12 in-lbs. Do not over-tighten.