

**CL & CLS Panel Mounts**  
400A 600V AC/DC ratings



**CLM & CLSM Mini Panel Mounts**  
150A 600V AC/DC ratings

# CAM Panel Mounts

Marinco Power Products offers a panel mounted CAM solution to go with our Series 16 and 15 (Mini) inline CAM offering. All of our panel mounted CAMs provide Nema 3R and 4 protection when mated with our series 16 and 15 (Mini) inline CAMs. Series 16 and 15 (Mini) panel mounted CAMS are UL listed and CSA certified and can be used with optional CAM covers to meet NEMA 3R environmental protection when not in use.

We offer Santoprene and Nylon versions in double set screw, bus bar and threaded stud configurations. Santoprene panel mount male and female come with brass threaded inserts with an option for drilled holes to accept #10-32 nuts and bolts. Nylon panel mount male and female come with self-threading screws with an option for drilled holes to accept #10-32 nuts and bolts.



Santoprene & super tough Nylon option

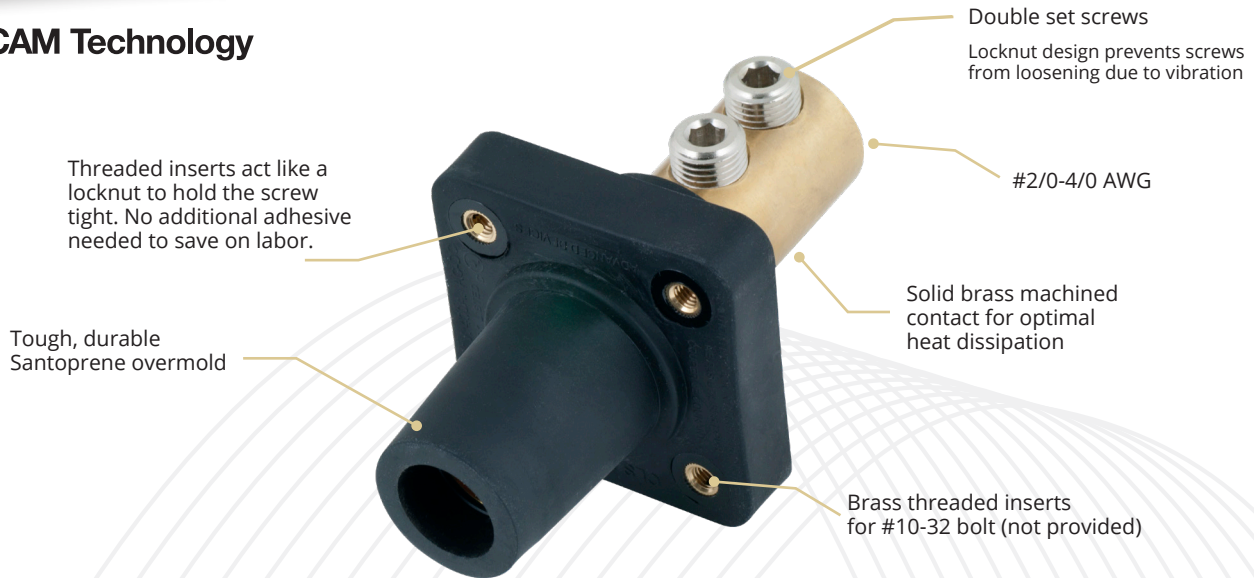
Brass threaded inserts for #10-32 bolt (not provided)

Double set screw, bus bar and threaded stud configurations

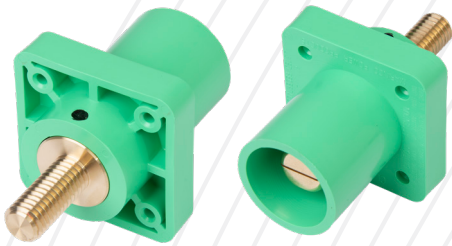
Comes in all colors



# 400A 600V Panel Mounts (CL & CLS)



Note: Panel mounts, mounting holes, and wiring connections are fully interchangeable with all competitive parts.



## CL Panel Mounts

- Super Tough Nylon
- 400A 600V
- Comes with qty (4) of #8 Plastite Self Threading Screw for Mounting Flange
- Optional drilled out version (X) for #10-32 nut and bolt

Wire Connection	M/F	Part #
#2-2/0 AWG double set screw	Male	CL20MRB
	Female	CL20FRB
2/0-4/0 AWG double set screw	Male	CL40MRB
	Female	CL40FRB
One hole bus bar 5/16" - 18 thread	Male	CL40MRB-BB*
	Female	CL40FRB-BB*
1-1/8" threaded stud	Male	CL40MRSB
	Female	CL40FRSB
2" threaded stud	Male	CL40MRSB2
	Female	CL40FRSB2

\*brass threaded insert



## CLS Panel Mounts

- Santoprene
- 400A 600V
- Brass threaded inserts for #10-32 bolt (Not provided)
- Optional drilled out version (X) for #10-32 nut and bolt

Wire Connection	M/F	Part #
2/0-4/0 AWG double set screw	Male	CLS40MRB
	Female	CLS40FRB
One hole bus bar 5/16" - 18 thread	Male	CLS40MRB-BB
	Female	CLS40FRB-BB
Two hole bus bar 5/16" - 18 thread	Male	CLS40MRB-BB2
	Female	CLS40FRB-BB2
1-1/8" threaded stud	Male	CLS40MRSB
	Female	CLS40FRSB
1-1/2" threaded stud	Male	CLS40MRSB1.5
	Female	CLS40FRSB1.5
2" threaded stud	Male	CLS40MRSB2
	Female	CLS40FRSB2



WHEN YOU ORDER

Part # + Color Letter ( A B C D E F G H ) + Drill Out (X) + .OEM = Ordering Number

Examples: CL20MRB + -E + X(drill out) + .OEM = CL20MRB-EX.OEM

CLM2FR2 + -H = CLM2FR2-H

# 150A 600V Panel Mounts (CLM & CLSM)



Note: Panel mounts, mounting holes, and wiring connections are fully interchangeable with all competitive parts.

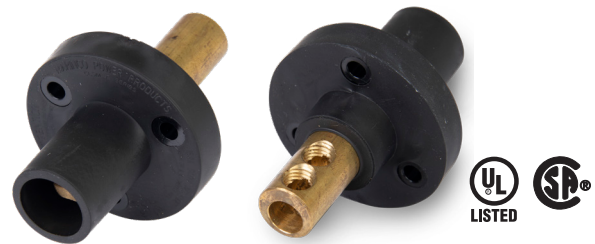


## CLM Mini Panel Mounts

- Super Tough Nylon
- 150A 600V
- Comes with qty (3) #8 Self Tapping Screws for Mounting Flange
- Optional drilled out version (X) for #10-32 nut and bolt

Wire Connection	M/F	Part #
#8-#2 AWG double set screw	Male	CLMMR2
	Female	CLMFR2
5/16"-18 threaded stud 3/4" long	Male	CLMMRS
	Female	CLMFRS

**A B C D E F G H**



## CLSM Mini Panel Mounts

- Santoprene
- 150A 600V
- Drilled out for #10-32 nut and bolt (Not provided)

Wire Connection	M/F	Part #
#8-#2 AWG double set screw	Male	CLSMMR2
	Female	CLSMFR2
5/16"-18 threaded stud 3/4" long	Male	CLSMMRS
	Female	CLSMFRS

**A B C D E F G H**

**WHEN YOU ORDER**

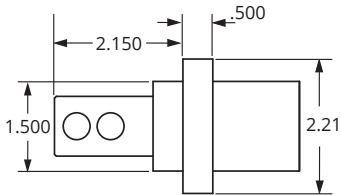
**Part # + Color Letter ( A B C D E F G H ) + .OEM = Ordering Number**

Examples: CLMMR2 + -E = CLMMR2-E

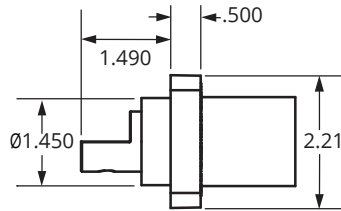
# Panel Mount Dimensions

## CL Panel Mounts

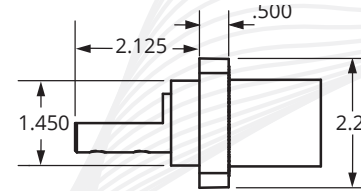
CL40MRB, CL40FRB, CL20MRB, CL20FRB,  
CLS40MRB, CLS40FRB



CL40MRB-BB, CL40FRB-BB,  
CLS40MRB-BB, CLS40FRB-BB

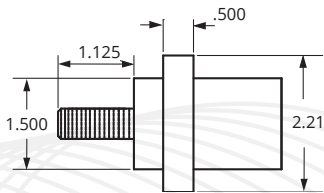


CLS40MRB-BB2, CLS40FRB-BB2

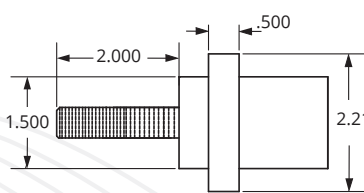


## CLS Panel Mounts

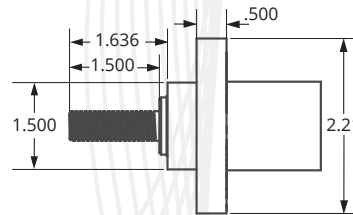
CL40MRSB, CL40FRSB,  
CLS40MRSB, CLS40FRSB



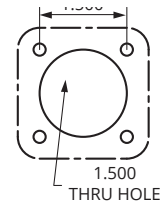
CL40MRSB2, CL40FRSB2



CL40MRSB1.5, CL40FRSB1.5

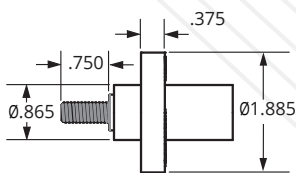


CL, CLS Panel Mount  
Family Cut-out

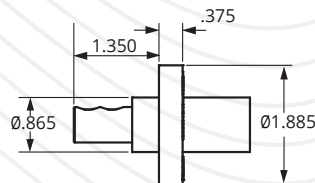


## CLM/CLMS Mini Panel Mounts

CLMMRS, CLMFRS, CLSMMS, CLSMFRS



CLMMR2, CLMFR2, CLSMFR2



CLM Panel Mount Family Cut-out

