

Clamp-Lock™ Termination System



Clamp-Lock™ Termination System

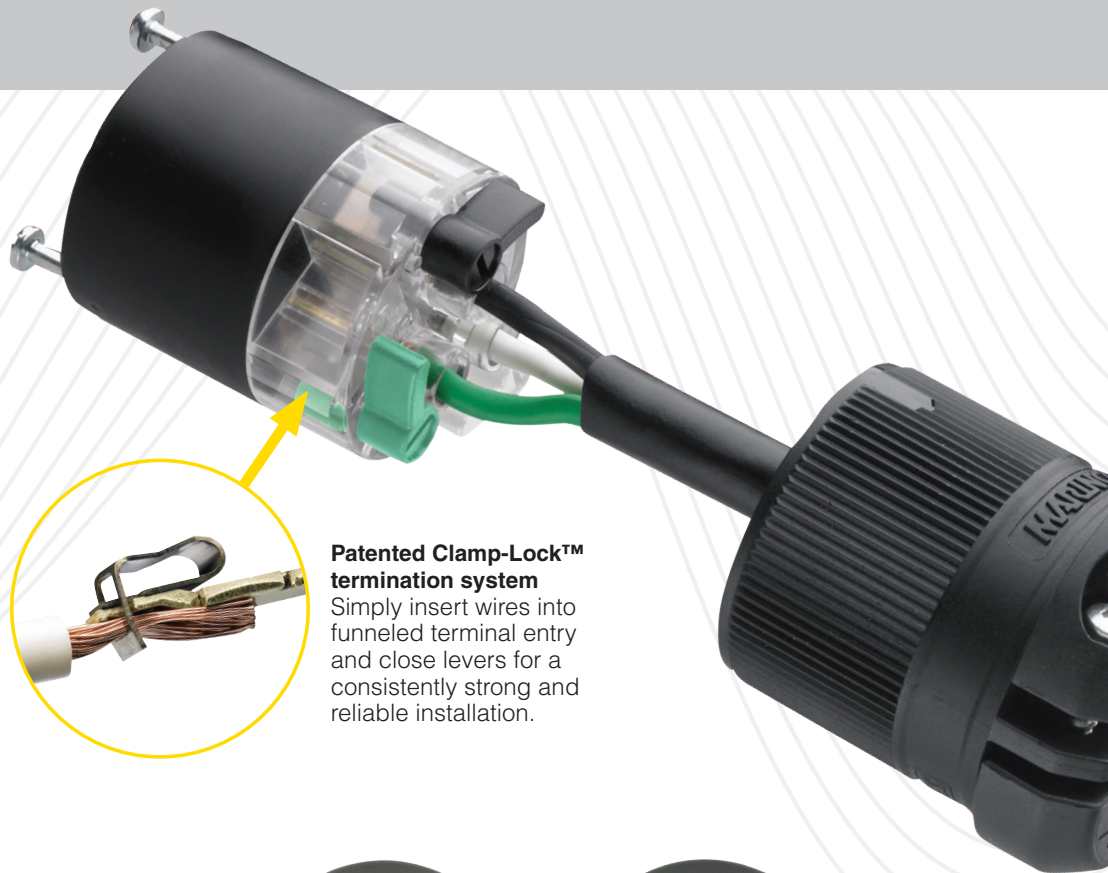


Quick, Strong and Reliable

The Clamp-Lock termination system provides a maintenance-free connection. This revolutionary system actually gets stronger as the cable is pulled, which provides peace of mind knowing this durable trouble-free solution can handle heat, shock and vibration. Most important, Clamp-Lock enables wiring termination up to 50% faster than conventional screw termination products resulting in a more cost-effective process.

How Does it Work?

Use the built-in gauge to measure how much wire insulation should be stripped. Then, to connect the three wires, simply open the color-coded green, white and black cam levers, insert the wires and then close the cam levers—no tools are needed. The cage clamp grips the wire with redundant normal force and doesn't let go. Slide the housing over the connection and lock it positively in place with two captive screws.



Patented Clamp-Lock™ termination system

Simply insert wires into funneled terminal entry and close levers for a consistently strong and reliable installation.

Removeable inserts for various cable diameters

For proper assembly with larger gauge cables, Clamp-Lock is furnished with removable cable clamp inserts.



Check out the Video!

Find out more about the Clamp-Lock system and see it in use.



Selection Chart

Amps	Poles/ Wires	Voltage	NEMA Config.	Body	Housing	Plug	Connector	
15	2P 3W	125	5-15R	5-15P	white	black	CL5266 CL5266.OEM	CL5269
15	2P 3W	125	5-15R	5-15P	black	black	CL5266BL	CL5269BL
15	2P 3W	250	6-15R	6-15P	white	black	CL5666	CL5669
20	2P 3W	125	5-20R	5-20P	white	black	CL5366	CL5369
Hospital Grade								
15	2P 3W	125	5-15R	5-15P	white	black	CL8215	CL8219
15	2P 3W	125	5-15R	5-15P	white	clear	CL8215T	CL8219T

*OEM packs are 50/pack.



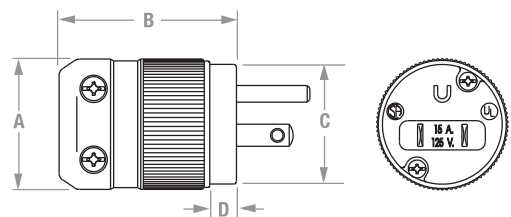
Product Specifications

Agency Listings	U.L. Listed File E57672 C.S.A. Certified File LR81290
Dielectric Withstand Voltage	>3,000V
Heat Rise	Maximum 30°C after 100 cycles at 150% of rated current
Current Interrupting	Yes
Terminal Accommodation	18/3 SJ through 10/3 S Cable
Housing and Body	Nylon – Tough and resistant to a wide range of chemicals. U.L. Recognized for 125°C continuous use. U.L. 94V-2 Flammability Index.
Cord Clamp	Adjustable via nylon inserts
Terminal Blades & Contacts	Solid brass for excellent connectivity
Terminal Cover	Clear polycarbonate
Cord Accommodation	With inserts (0.300"–0.430") Without inserts (0.430"–0.655")

Dimensions

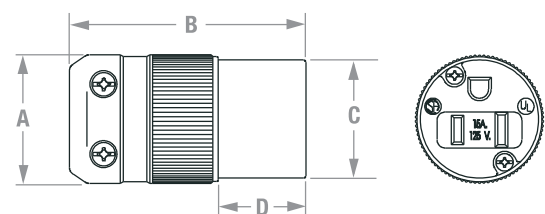
Plugs

A	B	C	D
1.53"	2.09"	1.40"	.26"



Connectors

A	B	C	D
1.53"	2.79"	1.40"	.96"



Check out our NEW Products

SeaLink® Dual USB Charger & Receptacle

An expansion of the durable SeaLink 12V product line, the combination Dual USB features two ports to charge cell phones, tablets and other devices powered by USB's, a blue LED to show that power is available, and a cover to prevent water and dirt from entering the ports. These products are ideal for your USB charging needs and designed for longevity in harsh environments.



New & Improved Inline Cams

Our inline cams are the best in the industry, but we're always looking for ways to make our devices work better for you. We personally visited a number of our customers to see our inline cams in action and received input on what we could improve.

As a result, we updated our 16 & 18 series cams to use a smoother body design that eliminates sharp edges that can get caught during use. This design also provides a perfectly contoured ergonomic grip to give you maximum control during mating and removal. Highly visible alignment arrows guide quicker alignment during mating.

Add these improvements to the fact that we've added a wider screw driver slot, wider cut lines and offset internal steps you'll see that our inline cams are now better than ever.



Place your order at orderentry@marinco.com or call 800.307.6702