

product specifications for:  
**CLS 45 Degree Panel Mounts**

**Item #: CLS45FR2SB**

**Description**

CAM CLS 45 2" threaded stud Female Panel Mount

**Electrical Specifications**

Max. Amperage: 400A

Max. Voltage: 600V AC/DC

Short Circuit Rating (SCCR): 35kA (UL 508)

Tested at rated voltage with no circuit protection

**Material Specifications**

Housing Material: Santoprene TPV

Contact Material: One piece solid Brass

Temperature Rating: -40°C to 105°C

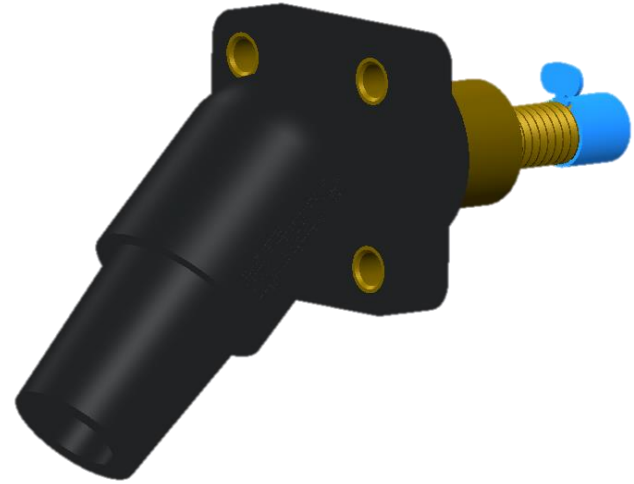
**Mechanical Specification**

Gender: Female

Connection Type: 1/2"-13 X 1.125" threaded stud  
(Torque to 25 ft.-lbs., do not over tighten)

Mounting: Brass eyelet for #10-32 through bolt  
(Bolts Not Provided)

Example: CLS45FR2SB + **A** = CLS45FR2SB-A



**Standards and Certifications**

UL Listed: File E471676

CSA Certified: 0812900000

Environmental Rating: Type 3R & 4

