

# product specifications for: CLS 40 Panel Mounts

## Item #: CLS40FRSB

### Description

CAM CLS 40 1-1/8" threaded stud Female Panel Mount

### Electrical Specifications

Max. Amperage: 400A

Max. Voltage: 600V AC/DC

Short Circuit Rating (SCCR): 35kA (UL 508)

Tested at rated voltage with no circuit protection

### Material Specifications

Housing Material: Santoprene TPV

Contact Material: Brass

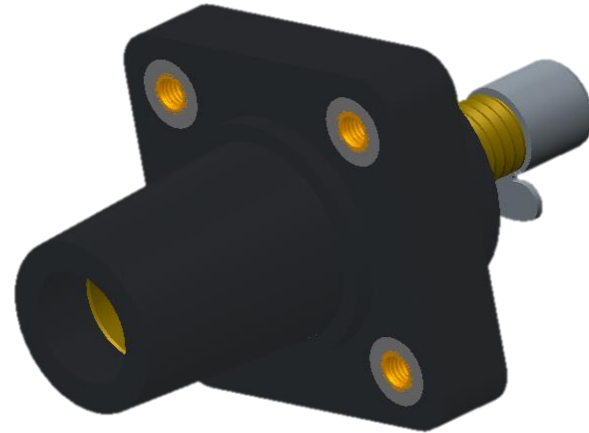
Temperature Rating: -40°C to 105°C

### Mechanical Specification

Gender: Female

Connection Type: 1/2"-13 X 1.125" threaded stud  
(Torque to 25 ft.-lbs., do not over tighten)

Mounting: Brass eyelet for #10-32 bolt  
(Bolts Not Provided)



### Standards and Certifications

UL Listed: File E471676

CSA Certified: 0812900000

Environmental Rating: Type 3R & 4

Example: CLS40FRSB + **A** = CLS40FRSB-A

