

product specifications for:

CL 16 Series Panel Mounts

Item #: CL40MRB

Description

CL 2/0-4/0 Double Set Screw Male Panel Mount

Electrical Specifications

Max. Amperage: 400A

Max. Voltage: 600V AC/DC

Material Specifications

Housing Material: Nylon

Contact Material: Brass

Temperature Rating: -40°C to 125°C

Mechanical Specification

Gender: Male

Connection Type: Double Set Screw

Cable Range: 2/0 – 4/0 AWG

Mounting: #8-16 X 5/8" SS Plastite Self Tapping Screw

(4 Screws are provided)

Optional drilled out version (X) for

#10-32 nut and bolt



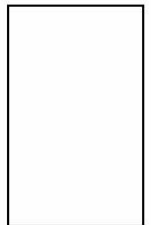
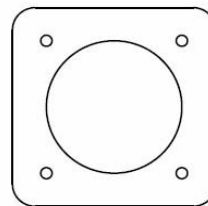
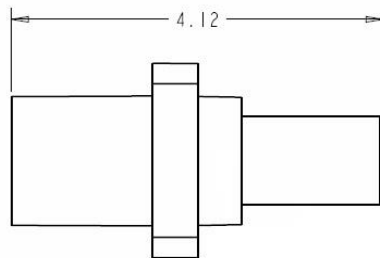
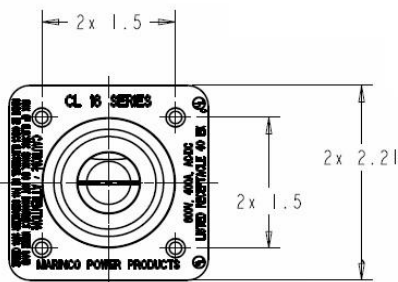
Standards and Certifications

UL Listed: File E471676

CSA Certified: 0812900000

Environmental Rating: Type 3R & 4

Example: CL40MRB + **A** = CL40MRB-A



toll free 800.307.6702 | marincopowerproducts.com

©2015 Marinc Power Products. All rights reserved.

MARINCO
power products