

product specifications for:

# CL 16 Series Panel Mounts

## Item #: CL40FRSB

### Description

CL 1.125" Female Panel Mount

### Electrical Specifications

Max. Amperage: 400A

Max. Voltage: 600V AC/DC

### Material Specifications

Housing Material: Nylon

Contact Material: Brass

Temperature Rating: -40°C to 125°C

### Mechanical Specification

Gender: Female

Connection Type: 1-1/8" Threaded Stud  
(1/2-13 UNC Thread)

Cable Range: #2 – 4/0 AWG

Mounting: #8-16 X 5/8" SS Plastite Self Tapping Screw  
(4 Screws are provided)

Optional drilled out version (X) for  
#10-32 nut and bolt



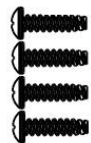
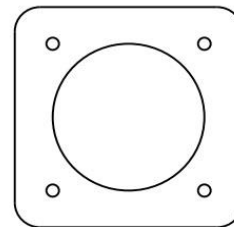
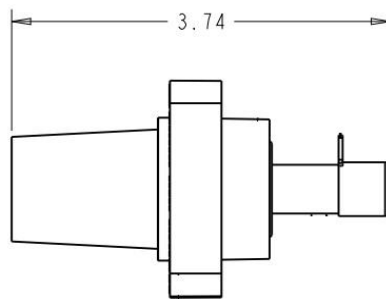
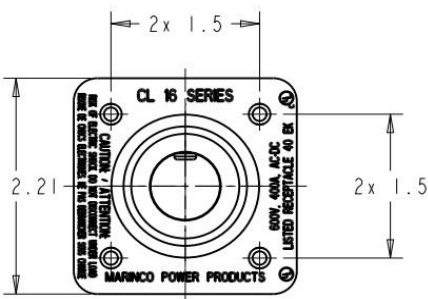
### Standards and Certifications

UL Listed: File E471676

CSA Certified: 0812900000

Environmental Rating: Type 3R & 4

Example: CL40FRSB + **A** = CL40FRSB-A



toll free 800.307.6702 | [marincopowerproducts.com](http://marincopowerproducts.com)

©2015 Maringo Power Products. All rights reserved.

**MARINCO**  
power products