

product specifications for:

# CL 16 Series Panel Mounts

## Item #: CL20FRB

### Description

CL #2 - 2/0 Double Set Screw Female Panel Mount

### Electrical Specifications

Max. Amperage: 400A  
Max. Voltage: 600V AC/DC

### Material Specifications

Housing Material: Nylon  
Contact Material: Brass  
Temperature Rating: -40°C to 125°C

### Mechanical Specification

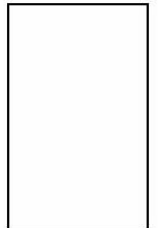
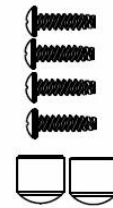
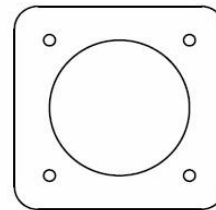
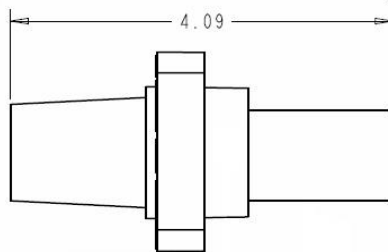
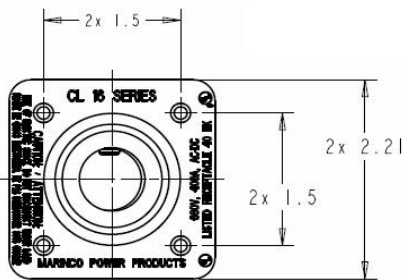
Gender: Female  
Connection Type: Double Set Screw  
Cable Range: #2 - 2/0 AWG  
Mounting: #8-16 X 5/8" SS Plastite Self Tapping Screw  
(4 Screws are provided)  
Optional drilled out version (X) for  
#10-32 nut and bolt



### Standards and Certifications

UL Listed: File E471676  
CSA Certified: 0812900000  
Environmental Rating: Type 3R & 4

Example: CL20FRB + **A** = CL20FRB-A



toll free 800.307.6702 | [marincopowerproducts.com](http://marincopowerproducts.com)

©2015 Marinc Power Products. All rights reserved.

**MARINCO**  
power products