

product specifications for:

16 Series Male - Male Coupler

Item #: CDMM

Description

Male - Male Coupler

Electrical Specifications

Max. Amperage: 400A

Max. Voltage: 600V AC/DC

Material Specifications

Housing Material: Santoprene TPV

Contact Material: Brass

Temperature Rating: -40°C to 105°C

Mechanical Specification

Gender: Male - Male Coupler

Example: CDMM + **A** = CDMM-A

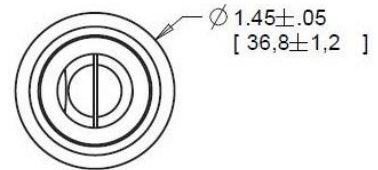
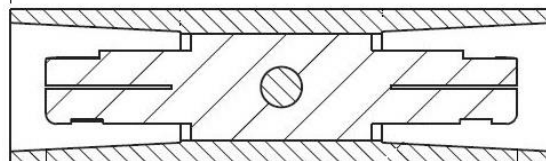
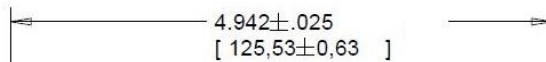
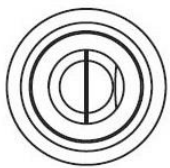
A **B** **C** **D** **E** **F** **G** **H**



Standards and Certifications

CSA Certified: 0812900000

Environmental Rating: Type 3R & 4



toll free 800.307.6702 | marincopowerproducts.com

©2015 Marinco Power Products. All rights reserved.

MARINCO
power products